

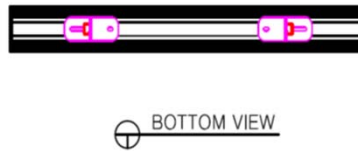
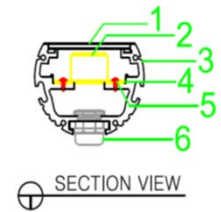
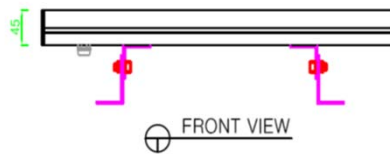
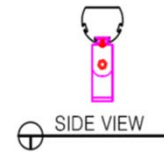
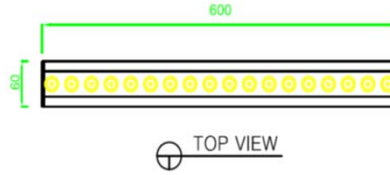
# LINEAR POWER LIGHT

NSI170-1.4

## IMAGE



## DETAIL



## DRIVER



LED HOUSING	Aluminum
COVER	Clear tempered glass
REFLECTOR	Lens / Beam Angle $\angle 10^\circ$
LED TYPE	LED PCB (LG INNOTEK社)
POWER	36W/M
LUMINOUS FLUX	3,450lm
COLOR RENDERRING INDEX	CRI 80
COLOR TEMPERATURE	3,000K
DRIVER	전용 LED SMPS 사용 (UNION社)
COLOR	-